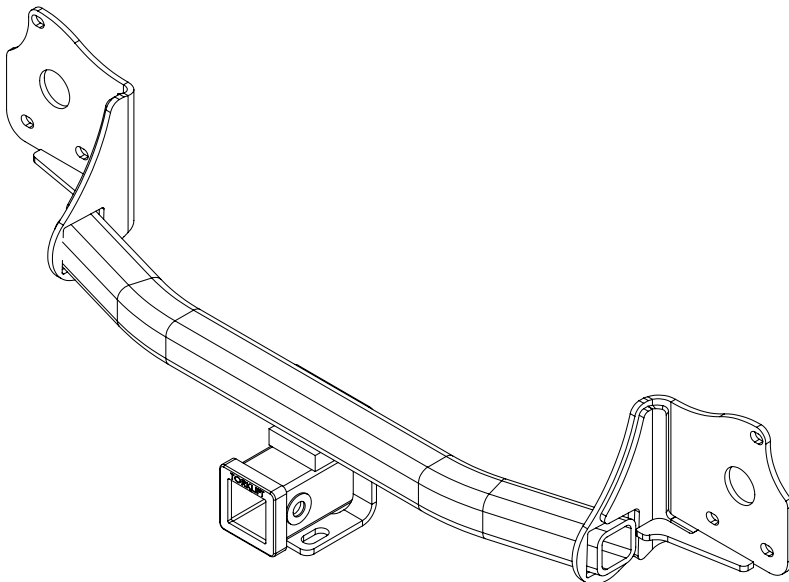


ecoHITCH -Designed Specifically For Your **Green Vehicle**

Installation Instructions

Application Fits
2015+ Honda Fit
X7273 & X7274

2" & 1.25" EcoHitch Stealth
200lbs Tongue Weight/ 2,000lbs Towing Weight



Torklift Central
315 Central Ave N
Kent, WA 98032
253-854-1832
www.torkliftcentral.com
support@tlcentral.com

Stay Connected



torkliftcentral



torkliftcentral



tlcentral



torklift central



torklift central



Bolt Kit Weight: 240g +/-

Hardware Included

QTY	Fastener
10	5/16" Flat Washer
10	5/16" Lock Washer
4	M8 - 1.25 Hex Nut
6	M8 - 1.25 x 40mm Bolt
1	16" Trim Lock Strip

READ THESE INSTRUCTIONS THOROUGHLY AND ACCOUNT FOR ALL HARDWARE LISTED BEFORE BEGINNING INSTALLATION!

Step 1. Raise rear of vehicle off of ground and place on ramps or suitable jack stands.

Step 2. Remove the two screws in the rear of the driver and passenger side wheel wells. See Figure [1].



Fig [1]

Step 3. Remove (5) push pin clips from underside of bumper. See Figure [2] & [3].



Fig [2]



Fig [3]

Step 4. Lift hatch and remove (4) fasteners from the lift gate molding on driver and passenger side. See Figure [4] & [5].



Fig [4]



Fig [5]

Step 5. Starting on the driver side at the wheel well, begin to peel and unsnap the bumper fascia off of the vehicle until you reach the rear. Move to the passenger side and begin peeling from the wheel well until you've worked your way to the back. Begin pulling rearward on the bumper fascia to complete removal.

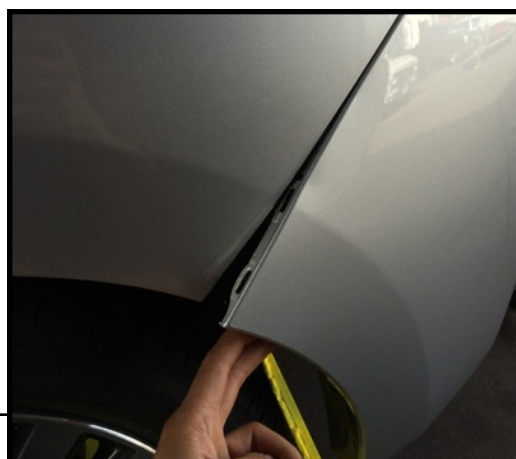


Fig [5]

Step 6. Remove impact bar by removing (6) hex cap screws on driver and passenger side. The impact bar has hooks to help keep it in place. To remove, simply lift impact bar upward and pull outward. See Figure [6] & [7].



Fig [6]



Fig [7]

Step 7. With impact bar removed, use a pair of pliers to bend the hooks upward to allow for reinstallation later. See Figure [8].

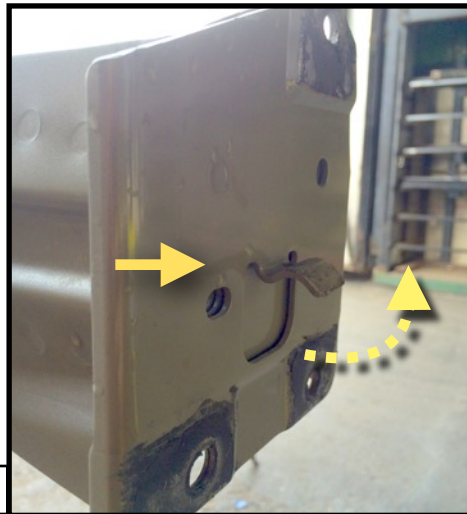


Fig [8]

Step 8. Install the supplied M8 - 1.25 x 40mm bolts, 5/16" lock washer, and 5/16" flat washer on the lower two weld nuts of the driver and passenger sides so that the ends of the bolts face rearward. Tighten until lock washers are crushed. See Figure [9] and [10] for reference.

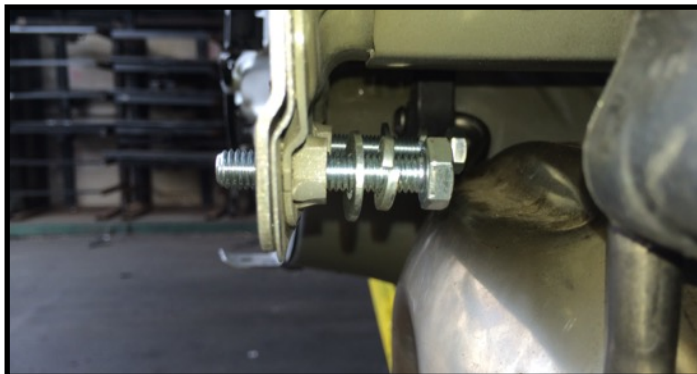


Fig [9]

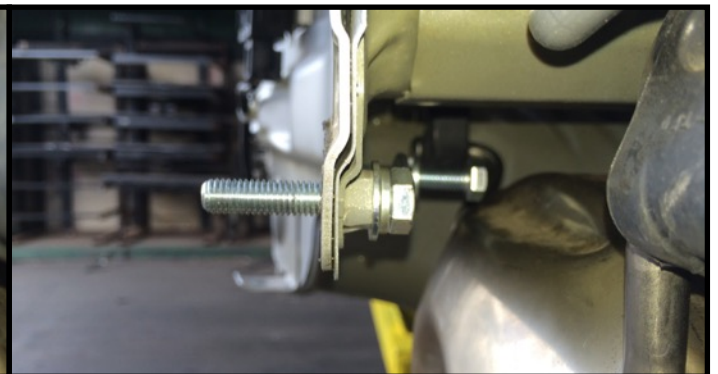


Fig [10]

Step 9. Place hitch onto bolts and place impact bar over the hitch. Secure bottom bolts with a 5/16" flat washer, 5/16" lock washer, and M8x1.25 nut. Use (1) M8-1.25x40mm bolt, (1) 5/16" lock washer, and (1) 5/16" flat washer to secure hitch at the top hole on the driver and passenger side. Torque all hardware to 20 ft-lbs. See Figures [11] & [12].

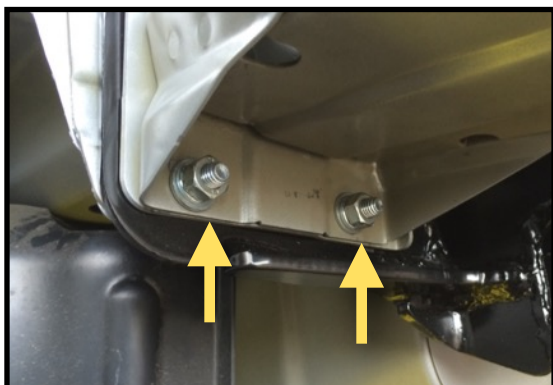


Fig [11]



Fig [12]

Step 10. Before reinstalling the bumper fascia you will need to trim out a 5-1/2" x 4-1/2" x 3" section of the bumper to allow the hitch receiver to fit. Find the center of the bumper and mark your template before making any cuts to ensure accuracy. Once trimmed, slide on the supplied Trim Lock and cut excess to fit.

See Figure [11].

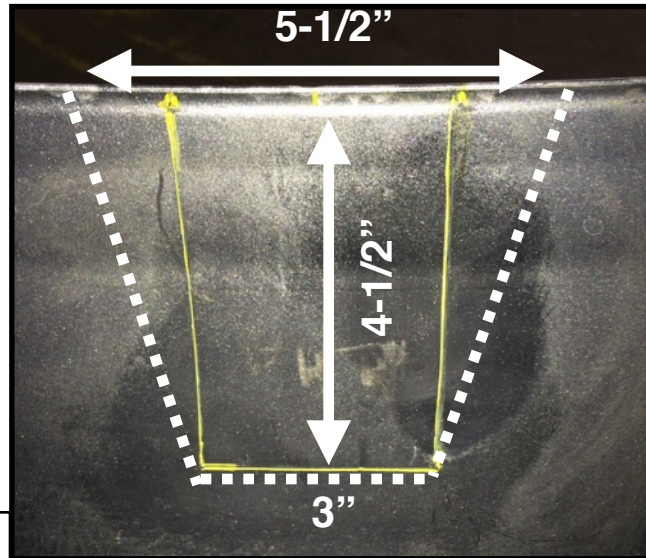


Fig [11]

Step 10. With bumper fascia trimmed and Trim Lock installed, reinstall the bumper fascia by following removal steps in reverse order starting from Step 5.

Congratulations on the completed installation of the Honda Fit Stealth EcoHitch! It is designed with a lifetime warranty for a lifetime of enjoyment. If you have any questions or suggestions please contact our tech support at support@tlcentral.com or by phone at (253)-854-1832.



WARRANTY/DISCLAIMER INFORMATION

Torklift Central requires proof of purchase for warranty claim registration, with pictures of any defective product before issuing a replacement. Torklift will not accept claims on any product without proof of purchase, which can be faxed, scanned, emailed or mailed to the information provided below. Torklift Central warrants its hitches, custom hitch receivers and accessories (excluding electrical wire harnesses which carry a warranty from their specified manufacturer) from date of purchase against defects in material and workmanship under normal use and service for the ownership life of the original consumer purchaser. Torklift Central will replace free of charge any part that proves defective in material or workmanship when presented to Torklift Central, transportation charges prepaid by purchaser, at the address above. **This warranty is limited to defective parts replacement only. Labor charges and/or damage incurred in installation or replacement, as well as incidental and consequential damages connected therewith are excluded.** This warranty does not include normal wear and tear or the finish and paint. Rusting, cracking or peeling of the finish is also excluded. Some states do not allow the exclusion or limitation of incidental or consequential damages, so the above limitation or exclusion may not apply to you. Any damage to Torklift Central products as a result of misuse, abuse, neglect, accident, improper installation or any use violative of instructions furnished by Torklift Central will void the warranty. This warranty gives you specific legal rights and you may also have rights, which vary from state to state. With warranty service, you may be able to go to a small claims court, a state court or a federal district court.

Although Torklift Central trailer hitches are both tested and rated for towing within the specific capacity label found on each trailer hitch. Torklift Central assumes no liability for vehicle manufacturers warranty due to the use of a Torklift Central trailer hitch being used for towing behind any vehicle or using the trailer hitch in a manner that it was not designed for. Although this specific trailer hitch has a load rating, which includes trailer tongue weight, and a trailer weight carrying capacity, Torklift Central is not responsible for the voiding of any warranty on any vehicle due to factory towing limitations. All vehicle warranties are the sole property and responsibility of the owner of the vehicle that the Torklift Central trailer hitch is installed upon. Torklift Central does not endorse towing behind any vehicle if the vehicles manufacturer states that towing is not recommended. Check your vehicle's owner's manual for the proper tow rating of your vehicle.

WARNING Your vehicle may have a lower tow rating than this trailer hitch. If your vehicle's tow rating is less than the rated towing capacity on your Torklift Central trailer hitch, your trailer hitch capacity is limited to your vehicle's factory rated towing capacity.

FOR EXAMPLE: the label on your Torklift Central trailer hitch states it's capacity is rated for 500 pounds tongue weight and 5,000 pounds towing weight. However your vehicle's factory rated towing capacity is limited to only 350 pounds tongue weight and 3,500 pounds towing weight. In this example your maximum towing capacity of your Torklift Central trailer hitch is limited to 350 pounds tongue weight and 3,500 pounds towing weight as stated by your vehicle's maximum factory tow rating.

DANGER Never exceed your vehicle's manufacturer's recommended towing capacity which may be a lower rating than this trailer hitch

Unsure of your tow rating? Download our towing app from the app store to find your vehicles tow rating.
www.torkliftcentral.com/app.php